

# AIM-89H

## 13.3" Medical-Grade Tablet with Intel® Core™ i5 processor



### Features

- 13.3" Full-HD IPS projected capacitive 10-point multi-touchscreen with anti-fingerprint, anti-glare Corning® Gorilla® Glass
- Intel® Core™ i5 processor support on Windows 10 LTSC for high performance
- EN/UL 60601 certification, ensuring patient and medical staff safety by protecting against excessive heat and electronic interference
- Equipped with DeviceOn/iService software for remote device management
- Supports touch mode with gloved operation and an active stylus pen
- IP65-rated protection from water and dust ingress
- MIL-STD-810G Shock/Vibration compliance with 4-ft drop tolerance
- Built-in Wi-Fi 6, Bluetooth 5.2, and Gigabit LAN for high speed connectivity
- 16-pin pogo connector for Desk Docking Stations and VESA Mount Bracket
- Antimicrobial design with IONPURE® on the rear cover, allowing for repeated cleaning with disinfectant



### Introduction

AIM-89H tablet is a slim, rugged, multi-functional, Intel-powered 11th Core™ i5 processor high performance tablet for medical and commercial uses. The IP65 water/dustproof 13.3" IPS Full HD screen with capacitive 10-point multi-touchscreen, anti-fingerprint (AF), anti-glare (AG), Gorilla Glass, could support touch mode under glove, rain, water puddle. Built-in Wifi 6, bluetooth 5.2 and gigabit LAN supports fast, steady connectivity. Internal front (5M) and rear (8M) camera provide picture capturing wherever. MIL-STD-810G shock/vibration compliant tested on our rugged design with 4ft (1.2m) drop tolerance. ITE/Medical grade dual certification are ready for indoor and healthcare environment.

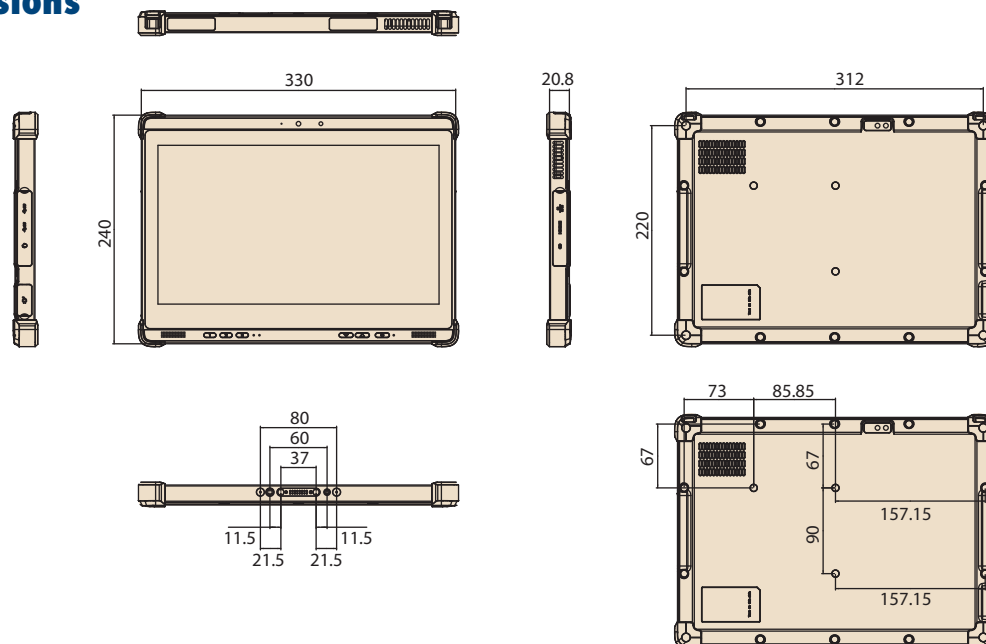
Moreover, AIM-89H is equipped with Advantech's DeviceOn/iService software, which is a next-generation unified device management solution based on the WISE-DeviceOn platform. With support for batch operations and multi-device control, DeviceOn/iService enables easy device configuration and deployment for convenient remote device management.

### Specifications

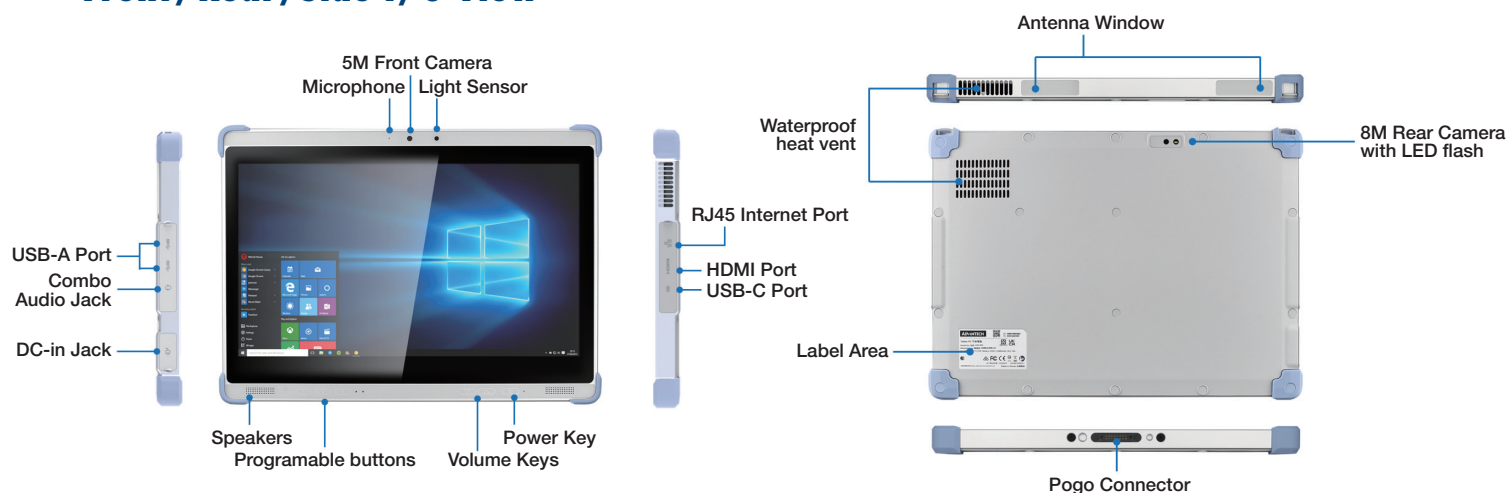
System	Processor	Intel® Core™ i5-1145G7E Processor quad-core, 1.5 GHz (8M Cache, up to 4.10 GHz)	
	Memory	8GB DDR4	
	OS	Windows 10 IoT Enterprise (Windows 11/Linux OS optional)	
Storage	SSD	256 GB (m.2)	
	Type	13.3" IPS LCD	
Display	Resolution	FHD 1920x1080	
	Brightness	400 cd/m²	
	Touch Type	10-point multi-touch P-CAP touch control	
	Glass Type	Corning® Gorilla® Glass 3 (Anti-Fingerprint, Anti-Glare)	
	Touch mode	Normal (support under water puddle), Glove	
Communication	WLAN	IEEE 802.11 a/b/g/n/ac/ax (Wi-Fi 6)	
	Bluetooth	Bluetooth® v5.2	
Connectivity	Standard I/O	1 x Gigabit LAN, 1 x HDMI, 2 x USB-A 3.1 Gen 2, 1 x Audio Jack, 1 x 19 VDC-in jack 1 x USB-C 3.1 Gen 2 (10Gb/s, HDMI Alt, 5V, 2A, Charging via AIM-89H Adaptor with DC to Type-C Dongle Accessories)	
	Docking	1 x AIM docking 16-pin pogo connector: 1 x USB 3.1 Gen 2	
Audio	Audio Jack	1 x Audio combo jack (combines stereo audio output and mono microphone input)	
	Speaker	2 x Internal water proof speakers (2 W)	
Camera	Front	5.0-megapixel fixed-focus camera	
	Rear	8.0-megapixel auto-focus camera with LED flash	
Sensors		Ambient Light Sensor, G-sensor, Gyroscope	
Control Buttons		1 x Power button, 2 x Volume key (up/down), 3 x Programmable button	
System Indicator		Full: green (90~100%); Charging: blue; Low: red (<10%)	
Power System	Input Voltage	DC jack: 19V/4.74A (90W)	
	Battery	Embedded Lithium-ion battery; 10.8V, 4660 mAh, 50.32 Whr Operating time: Up to 4.5 hours (depending on usage scenario) Charging time: < 3 hours	
Environment	Operating Temperature	0 ~ 40 °C (32 ~ 104 °F) Discharging: 0 ~ 40 °C (32 ~ 104 °F) Charging: 0 ~ 35 °C (32 ~ 95 °F)	
	Storage Temperature	-20 ~ 60 °C (-4 ~ 140 °F)	
	IP Rating	IP65	
	Shock	MIL-STD-810G standard	
	Vibration	MIL-STD-810G standard	
	Drop Tested	MIL-STD-810G standard, Up to 122 cm (4 ft) onto plywood over concrete	
	Humidity	Operating: 90% @ 40 °C non-condensing Storage: 95% @ 45 °C non-condensing Package: 95% @ 60 °C non-condensing	
Characteristics	Dimension (W x D x H)	330 x 240 x 20.8 mm (13 x 9.4 x 0.8 in)	
	Weight	1.8 kg (3.97 lb)	
	Color	White/Blue	
Certifications		FCC, CE, UKCA, IEC/EN/UL60601-1, EN 60601-1-2, ENERGY STAR, WEEE	

## Dimensions

Unit: mm



## Front/Rear/Side I/O View



## Ordering Information

Part Number	CPU	Memory	Storage	Front/Rear Camera	Corner	OS
AIM-89H-100100	Core-i5-1145G7E	8GB	256GB	V	Blue	Windows 10 LTSC 2021 (21H2)

## Optional Accessories

Part Number	Description
1700001524	Power cord (USA) UL 3P 10A 125V 183 cm
1700008921-11	Power cord (Japan) PSE 3P 7A 125V 183 cm
170203180A	Power cord (UK) BSI 3P 10A 250V 183 cm
170203183C	Power cord (EU) 3P 2.5A 250V 183 cm
TBD	AIM-89H Adaptor DC to Type-C Dongle

## Packing List

Description
1 x AIM-89H tablet
1 x AC/DC adaptor
1 x Power cord US

# AIM-89H Desk Docking Station



## Features

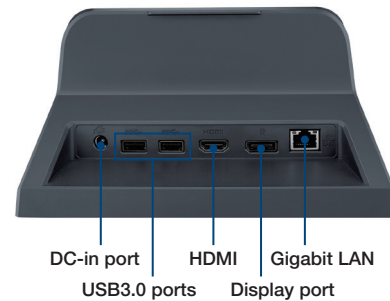
- Suitable design for office applications
- Reliable docking connector with LED indicator for connectivity
- Equipped with a variety of I/O for easy integration
- HDMI 1.3 and DP 1.1 for user quick set up extended screen
- Additional USB 3.0 ports extend peripherals like keyboard/mouse/data collection device

## Specifications

Desk Docking Station		
I/O		1 x HDMI 1.3
		1 x Display Port 1.1
		1 x Gigabit Ethernet (RJ45)
		2 x USB 3.0 Type A
		1 x 5.5 mm DC in port
Power	Input Voltage/Power	19V, 4.74A, 90W AC-adaptor
Mechanical	Dimensions (W x D x H)	162 mm x 180 mm x 133 mm
	Weight	1360 g / 2.99 lb
Environment	Operating Temperature	0°C - 40°C (32°F - 104°F)
	Storage Temperature	-20°C - 60°C (-4°F - 140°F)
	Relative humidity	Operating: 10% to 80% (non-condensing) Storage: 5% to 90% (non condensing)
	Certifications	FCC, CE, UKCA, IEC/EN/UL60601-1

## Dimensions

Unit: mm



## Ordering Information

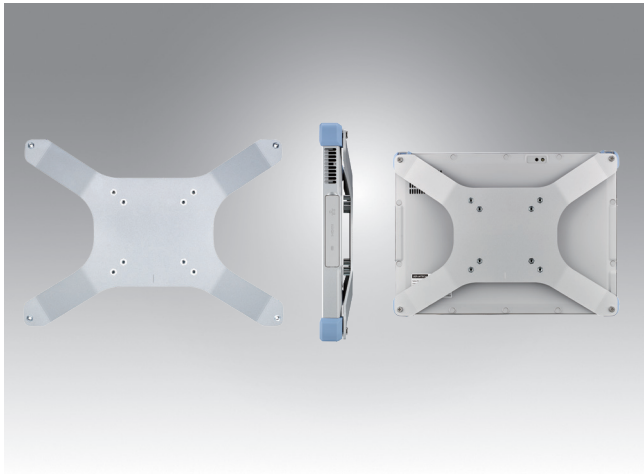
Part Number	Description
AIM-OFD0-0005	AIM-89H Desk Docking Station with full I/O

## Packing List

Description
1 x AIM-OFD0-0005

Note: The above product does not include adapter and power cable. Customers must order AIM-89H first and pair with specific country power cable for usage.

# AIM-89H VESA Mount Bracket



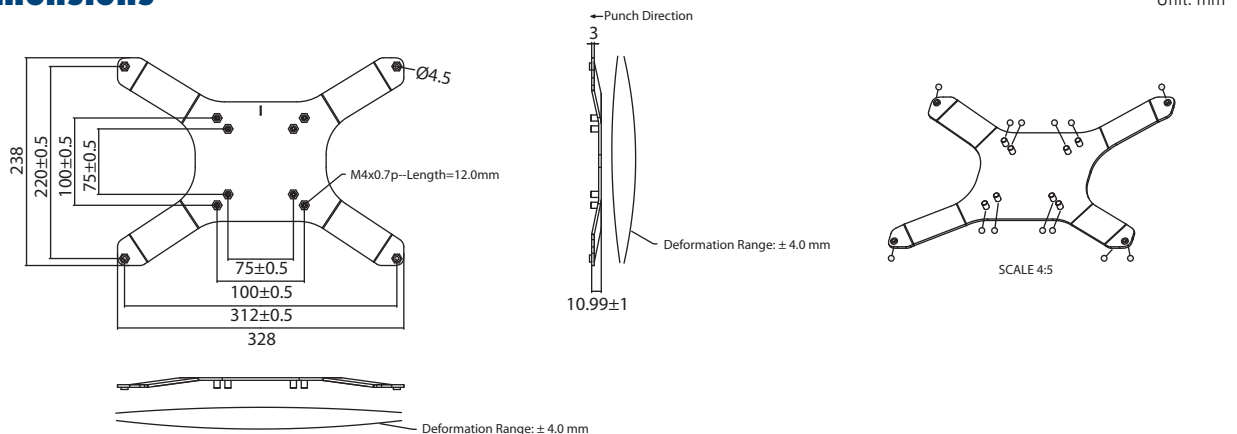
## Features

- Suitable design for VESA mounting applications
- Mounted on a nursing cart or other extended station for stabling use
- Installed on articulating arms or wall mounts
- VESA-compliant mounting solutions (VESA MIS D Standard 75/100)

## Specifications

VESA Mount Bracket		
Mechanical	Dimensions (W x D x H)	328 mm x 238 mm x 11 mm
	Weight	310g / 0.683 lb
Screws	Amount	4 pcs
	Dimensions	M4 -0.7P * 15mm
	Weight	1.8g / 0.004 lb

## Dimensions



## Ordering Information

Part Number	Description
AIM-VSB0-0001	AIM-89H VESA Mount Bracket with 4 Screws

## Packing List

Description
1 x AIM-VSB0-0001
4 x Screws (M4 -0.7P * 15mm)

# AIM-89H Accessories

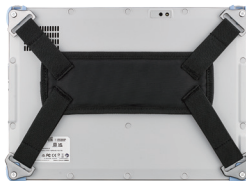
**Carry Strap**



**Shoulder Strap**



**Hand Strap**



Part Number	AIM-SRP0-0006	AIM-SRP0-0007	AIM-SRP0-0008
Features	<ul style="list-style-type: none"><li>▪ Straps with lanyard hook</li><li>▪ Enhance mobility</li></ul>	<ul style="list-style-type: none"><li>▪ Straps with lanyard hook</li><li>▪ Enhance mobility</li></ul>	<ul style="list-style-type: none"><li>▪ Hand Straps with 4 Screws</li><li>▪ Enhance mobility</li></ul>
Dimensions	310 x 25 (mm)	1280 x 60 (mm)	338 x 235 (mm)
Weight	28g / 0.0617 lb	66g / 0.1455 lb	68 / 0.15 lb

# DeviceOn/iService

## Unified Remote Device Management Software



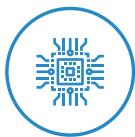
### Features

- Supports Advantech devices equipped with Windows, Android, and Linux OS
- Flexible device, location, user, and permissions management
- Enables remote monitoring and control of hardware, software, and peripherals
- Supports over-the-air (OTA) firmware and software updates
- Ensures quick, easy, and secure device onboarding
- RESTful APIs for third-party system integration

### Introduction

Advantech's DeviceOn/iService is a next-generation unified device management solution based on the WISE-DeviceOn platform. Designed to enable centralized monitoring and remote management, DeviceOn/iService supports Advantech devices equipped with Windows, Linux, or Android operating systems. The software also supports the management of applications and integrated peripherals, such as a barcode scanner, card reader, camera, and printer. Users can remotely access and control connected devices, take screenshots, rollout OTA upgrades, and use remote desktop capabilities for troubleshooting from any location at any time. Moreover, DeviceOn/iService supports batch operations to facilitate the management of multiple devices simultaneously for easy and convenient device configuration and deployment.

### Total Management



#### Devices & Hardware

- Windows, Linux, Android
- Hardware, storage, battery



#### Software & Peripherals

- Software monitoring & access
- Screens, USB devices, printers



#### Open for Expansion

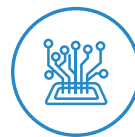
- Peripheral integration
- Open APIs for integration

### Remote Access



#### Real-Time Monitoring

- Connection/hardware status
- Software/peripheral status
- Failure notifications



#### Remote Controls

- Power controls
- Audio, backlight controls
- Software controls



#### Troubleshooting

- Screenshots
- Remote desktop support

### Operational Efficiency



#### OTA updates

- System/software updates
- File repository management
- App store



#### Batch Controls

- 1-to-many batch reboot, etc.
- Time-saving tasks



#### Setup Booster

- Software/peripheral watchlist
- Roles, rule templates

Note: Some functions may vary according to the product

### System Architecture

