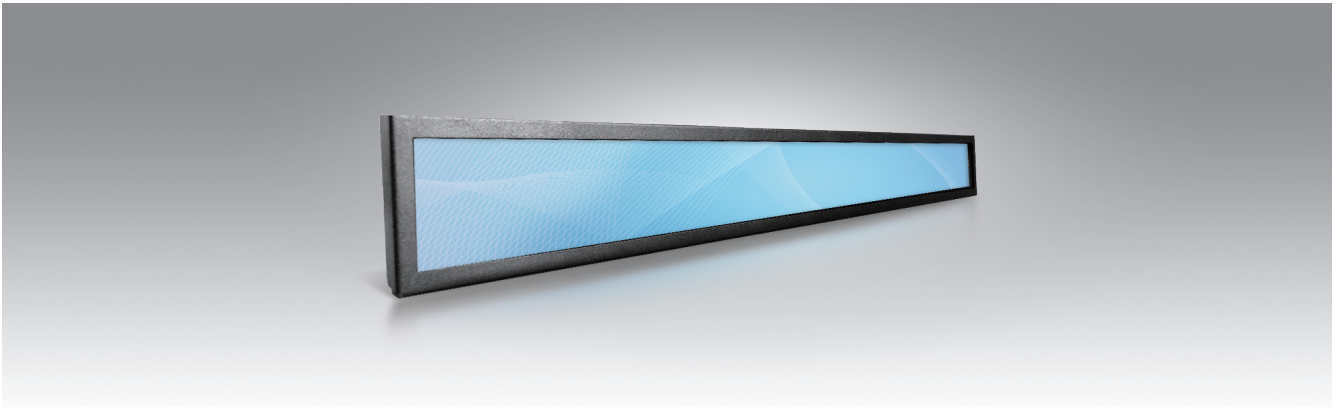


XDC41-231WP40USG1E

23.1" Shelf-EDGE Display



Introduction

The Shelf-EDGE (23.1") stretched monitor responds to a requirement for contemporary styling in the demanding Electronic Shelf Display application. This display allows retailers to deliver greater content to an increasingly informed consumer audience. With low power consumption, ultra-thin body design, high resolution display and excellent multi-touch interactive experience. Touch and Non-Touch options available.

Specifications

Model Name	XDC41-231WP40USG1E	
PC Parameters	Processor	RK3188 Quad-core Cortex-A9
	Memory	2GB
	Storage	16GB
	Operating System	Android 5.1
	Touch Technology	P-CAP
	Touch Point	4
LCD Panel Parameters	Display Technology	Active Matrix TFT-LCD With LED Backlight
	Active Display Area (W x H)	585.2 x 48.2 mm
	Native Resolution	1920x158
	Response Time (Typ.)	15ms
	Display Colors	16.7M
	Luminance (Typ.)	400nits
	Contrast Ratio (Typ.)	1000:1
Viewing Angle (Typ.)	Horizontal (left/right) CR≥10 170° (85°/85°) Vertical (up/down) CR≥10 170° (85°/85°)	
I/O Port	LAN	1xRJ45 (10/100Mbps/1Gbps)
	USB Port	1xUSB2.0
	Power In	1x12V DC Jet Ø2.5
Overall Parameters	Case/Bezel Color	Black
	Mounting Options	VESA: 200 x 400mm
	Outline Dimension (W x H x D)	603.6 x 65.5 x 48.3 mm
	Power Supply	Input Voltage Range: +12V _{DC} ± 5%
	Power Consumption	30W
	Operating Altitude	≤3000m
	Temperature	Operating: 0 °C to 40 °C, storage: -20 °C to 60 °C
	Humidity (non-condensing)	Operating: 20% to 80%, storage: 10% to 90%
	MTBF	30,000 hours
	Warranty	1 year

