

**Digitalizing hazardous areas.
Enabling connectivity.
Enhancing mobility.**



Tab-Ex® Pro 10" Android
Tablet for Zone 2/22 and Div. 2
Hazardous Areas



Your automation, our passion.



The World's First 10" Android Tablet for Hazardous Areas

The new Tab-Ex® Pro is the next major component in ecom's successful tablet series. Featuring the world's first ten-inch display with Zone 2/22 and Div. 2 approvals, the device is ideal for web-based content and the most demanding Industry 4.0 applications. The Samsung DeX function turns the compact tablet into a full desktop computer, and additional accessories, peripherals, digital products, and services ensure superior flexibility.



Total Reliability, Global Use

ecom's new Tab-Ex® Pro is the world's first 10.1" Android tablet to be certified for Zone 2/22 and Div. 2. Based on the Samsung Galaxy Tab Active Pro, the device stands for tested quality, compatibility, and a long-standing, successful partnership with Samsung. Despite the large screen, the tablet is impressively slim, lightweight, and easy to use. The multitouch display can be operated with an S Pen and with gloves, and offers optimal readability even in direct light. From indoor pharmaceutical applications to harsh ambient conditions, the Tab-Ex® Pro is designed for use in temperatures ranging from range of -20 °C to +55 °C and worldwide use in the most demanding industries.



Cutting-Edge Technology for Industry 4.0

With the largest display in its class, the new Tab-Ex® Pro from the Pepperl+Fuchs brand ecom is ideal for viewing detailed maintenance instructions or web-based content. Google ARCore is used to implement important augmented reality applications, such as remote support and training, and tailor-made tools for predictive maintenance. These features support quality assurance and make plants safer.




Impressive Performance, Ideal for Mobile Workers

Via Samsung DeX mode, the Tab-Ex® Pro can be quickly and easily connected to a keyboard, mouse, and monitor in the office, turning the tablet into a convenient, user-friendly desktop computer. In addition, the powerful, replaceable 7400 mAh battery long shifts. Charging and data transfer take place via a pogo pin connector. Special keys on the new Tab-Ex® Pro can be customized—for example, as an emergency key for maximizing safety.

High Security Standards, Complete Protection

By combining Samsung Knox with the Android operating system, ecom's Tab-Ex® Pro ensures that company data and processes are secure. The multilayered security mechanisms of the Knox platform work together to protect against viruses, malware, and similar threats. For additional security and convenience, the device offers biometric authentication via facial recognition and a fingerprint scanner (only valid for the D2 version).



Operating system

- Android™ 9.0

Memory

- 4 GB RAM
- Up to 512 GB additional memory via microSD

Samsung DeX

- Connect to keyboard, mouse, and monitor

Dedicated keys

- User programmable buttons (alarm key, camera, etc.)

Two cameras

- 13 MP camera with autofocus and LED flash + 8 MP camera

Power

- Powerful replaceable battery (7400 mAh)

Extended temperature range







- 20 °C ... +55 °C

Connectivity

- WiFi standard 802.11 a/b/g/n/ac
- WiFi 2.4 GHz and 5 GHz
- Bluetooth® 5.0

Ports

- Pogo pin for power supply and data transmission
- USB-C for accessories

 <p>World's first 10" Android Tablet for Zone 2/22; Division 2</p>	 <p>Latest Android™ operating system: quick, safe, and efficient</p>	 <p>Connect a keyboard, mouse, and monitor via Samsung DeX mode for a desktop-like experience</p>
 <p>Ultra-rugged 10" multitouch display can be operated with gloves</p>	 <p>The wide screen is designed for IIoT and web-based applications</p>	 <p>Digital Products and Services provide a ready-to-use service that ensures quality and security</p>

Innovative Solutions from a Single Source

Pepperl+Fuchs offers a range of coordinated peripherals, accessories, and software solutions as an ideal complement to the Tab-Ex® Pro.

Exploring Mobility

Organizations are starting to realize how mobility solutions can benefit their business. Today, the focus is on technologies that reduce costs and improve efficiency. Game-changing breakthroughs in mobile computing and communication technologies are enabling industries to improve workforce safety and productivity, data quality, and the speed and

accuracy of decision-making. The Internet of Things (IoT) has become increasingly important in the industry and will change the way companies deploy labor to use resources more effectively.



Applications 4.0

- Inspection / Maintenance
- Asset management / Tracking
- Collaborative working
- Scanning / Auto ID
- Process automation / Operations
- Lone worker protection / Localization (GeolP)
- Engineering / Installation
- Augmented reality (AR)
- Security / Safety
- Push-to-talk (PTT)



Hardware

Peripherals

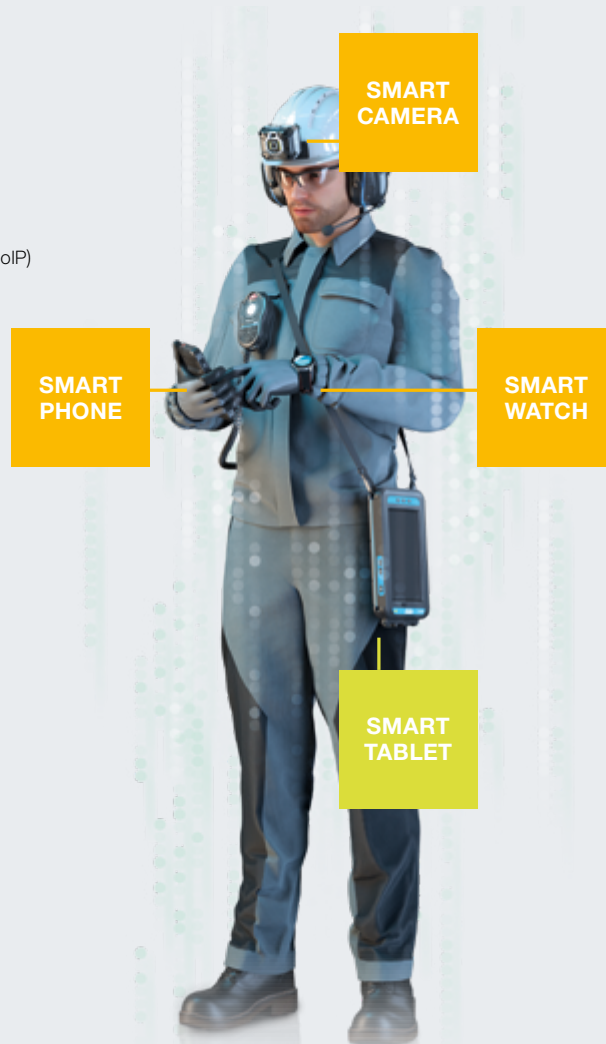
- Smartwatch
- Scanner
- Camera
- Headset
- Radio speaker microphone

Certification

- Ex certifications
- Regulatory
- Wireless certifications

Accessories

- Desktop charger / Docking
- Spare battery
- Case
- Cradles



Software

- User management
- Customized roles and rights
- Android Enterprise Recommended (AER)
- Android zero-touch
- Kiosk mode
- APKs
- API / 3rd party



Safety

- Mobile worker
- Assets
- Data



Support

- Sales and application engineering
- Service level agreements
- Service with repair and Ex testing



Digital Products and Services

- Preconfiguration / Staging
- Mobile device management (over-the-air)
- Device analytics

Digital Products and Services

Digital Products and Services is a solution that combines automated staging, mobile device management, and device analytics. It can also be used as a full-fledged enterprise mobility management system if desired.

At the customer's request, ecom's mobile devices can ship from the factory with predefined custom configurations such as security settings, applications, and wireless setup. This allows devices to be used anywhere in the world immediately upon delivery.

The devices can be managed via the ecom online platform and updated remotely at any time during operation without having to be sent to local IT staff or the head office.

Cloud servers hosted in Germany meet the highest data protection standards and guarantee high data availability and security.

One-time staging and enrolling can also be done internally via ecom's production servers. If desired, device diagnostics and analytics can collect real-time operational data and fault analyses to continuously monitor device status and fix malfunctions preventively or immediately.

Additionally, the platform analyzes historical data to detect critical software events, installations, and other safety-critical processes. A statistical accumulation of events can be used to establish correlations and causalities between software errors, geographical data, and Wi-Fi coverage, for example.

Digital Products and Services is a ready-to-use service that ensures quality and security for all devices. This saves time and valuable resources.

Find out more:

www.pepperl-fuchs.com/tab-ex-pro



Staging und Enrolling

eCSL – Custom Service Load

- Custom device preconfiguration
- Delivered ready-to-use

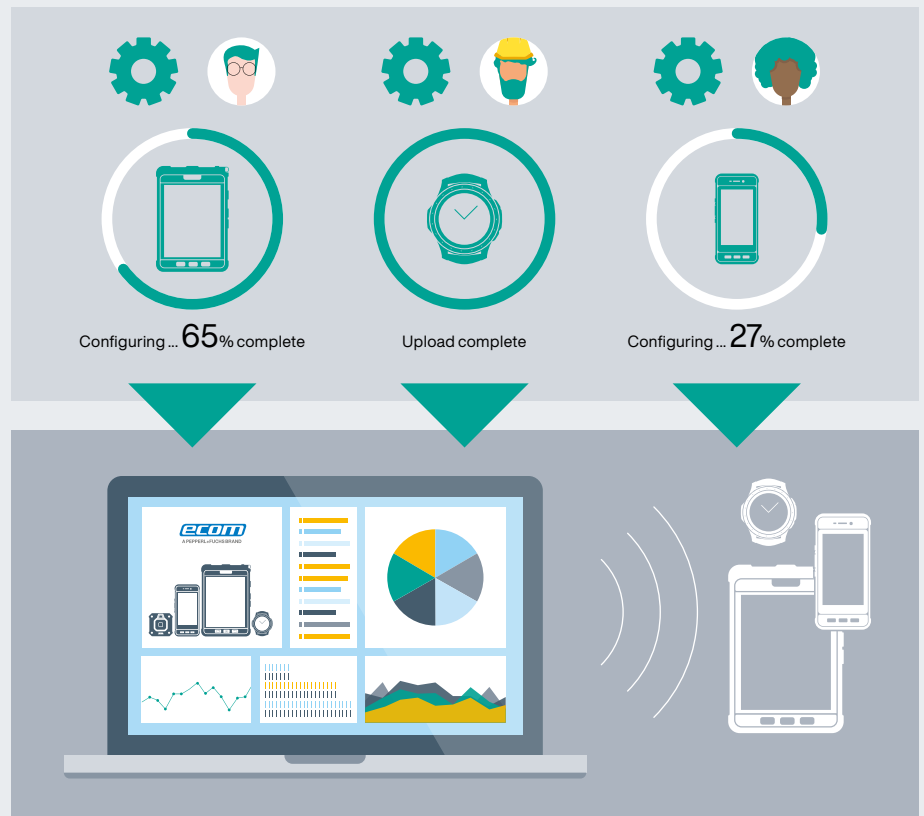
Configuring and Management

eMDM – Mobile Device Management

- Update devices around the world simultaneously

Device Diagnostics

- Analytics help avoid problems and correct errors



Accessories and Peripherals

Components such as desktop charger, remote speaker microphone (RSM), and headsets expand the range of applications for the new Tab-Ex® Pro and are perfectly suited for future IIoT solutions.

Accessories

- LC TPRO X2 leather case
- CH TPRO X2 chest harness
- BC T01 belt clip
- Carrying strap

Additional accessories can be found at www.ecom-ex.com

Smart-Ex® Watch 01

Smartwatch



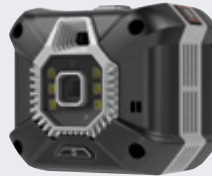
Ident-Ex® 01

Barcode scanner / RFID reader



CUBE 800

Ex-Camera



RSM-Ex 01

Loudspeaker microphone



Need a tablet for Zone 1/21 and Division 1?



Find out more:

www.pepperl-fuchs.com/tab-ex-02

Optimal Service, Global Support

Based on the Samsung Galaxy Tab Active Pro, the device stands for tested quality, compatibility, and a long-standing, successful partnership between Samsung and the Pepperl+Fuchs brand ecom. The tablet, which offers absolute safety and a huge range of applications, is based on 30 years of experience and a high level of application expertise.

Pepperl+Fuchs' extensive sales and service network provides support around the globe. Specialized technicians are available near you. Further support with software integration is available via our engineering and development teams.

To protect your investment, we offer a three-year service level agreement so your mobile assets are covered for your operational needs.



Tab-Ex® Pro D2



Tab-Ex® Pro DZ2

Digitalizing hazardous areas. Enabling connectivity. Enhancing mobility.



The Pepperl+Fuchs brand ecom is a leading manufacturer of comprehensive solutions for intrinsically safe mobile computing and industrial communication in hazardous areas.

Since 1986, ecom has played a key role in pioneering explosion protection for mobile devices. The company has demonstrated its technological expertise with a number of innovations and tried-and-tested mobile solutions—from intrinsically safe smartphones, cell phones, and tablets to accessories like wireless headsets and barcode scanners. ecom's new Digital Products and Services platform completes the portfolio, offering automated staging during device production, mobile device management, and device analytics; the platform can also be used as a full-fledged enterprise mobility management system.

Each of ecom's solutions combines uncompromised security with the highest level of functionality, and includes all necessary approvals and certificates for global use. A global sales and support network with service centers in Germany, the US, Singapore, and the United Arab Emirates completes the range of products.

Customers around the world know the Pepperl+Fuchs Group as a pioneer and innovator in electrical explosion protection and sensor technology. Building on decades of experience and technical leadership, the company develops components and solutions tailored to the needs of its customers. Solutions for mobile safety and communication from the Pepperl+Fuchs brand ecom enable customer applications to be digitalized quickly and easily. This opens up completely new possibilities and increases the safety, efficiency, and transparency of operations in both conventional and Industry 4.0 applications.

For more information about ecom, visit:

www.ecom-ex.com and www.pepperl-fuchs.com

Your automation, our passion.

Explosion Protection

- Intrinsic Safety Barriers
- Signal Conditioners
- FieldConnex® Fieldbus Infrastructure
- Remote I/O Systems
- Electrical Explosion Protection Equipment
- Purge and Pressurization Systems
- HMI Systems
- Mobile Computing and Communications
- HART Interface Solutions
- Surge Protection
- Wireless Solutions
- Level Measurement

Industrial Sensors

- Proximity Sensors
- Photoelectric Sensors
- Industrial Vision
- Ultrasonic Sensors
- Rotary Encoders
- Positioning Systems
- Inclination and Acceleration Sensors
- Industrial Ethernet
- AS-Interface
- IO-Link
- Identification Systems
- Displays and Signal Processing
- Connectivity

www.pepperl-fuchs.com

Subject to modifications • © Pepperl+Fuchs
Printed in Germany • Part. No. 70125748 09/20 00



Pepperl+Fuchs Quality

Download our latest policy here:

www.pepperl-fuchs.com/quality