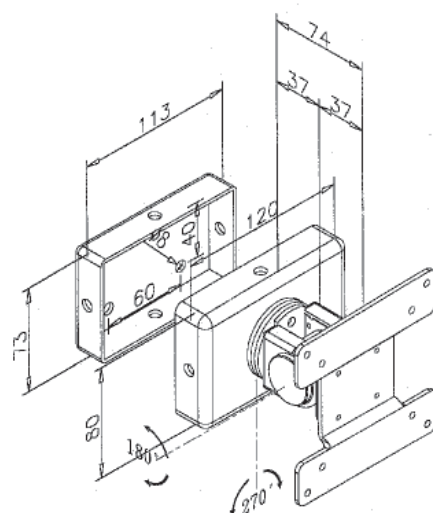


Delta Series Single Pivot LCD Wall Mounts

The Delta Series single pivot direct wall mount mounts any VESA 75mm or 100mm LCD monitor or tv close to the wall and provides tilt and portrait to landscape movement. Its two piece design allows for quick and simple installation. Supports up to 12 kg's in weight. Suitable for touch screen applications.

Available in black finish



Part Number: EM171B - Single Pivot Black

- Durable, cost effective adjustable wall mount for LCD monitors and TVs.
- Simple Installation.
- Tilt and landscape to portrait movement.
- Touch screen stable.
- Provides +/-90° tilt.
- Monitors can move through landscape to portrait.
- Supplied with 75mm x 75mm and 100mm x 100mm VESA interface plates.
- Can be locked off in position.

Specifications

Arm Ext.:	102mm
Monitor Height Adjust	None
Tilt Adjustment:	+/-90°
Monitor Swivel	0°
Monitor Orientation	Landscape to Portrait
Colour	Black
Touch Screen Stable	Yes
Keyboard and Mouse Tray	No
Max Monitor Weight	12kg
Product Warranty	3 Years

T +44 (0)1252 333326 F +44 (0)1252 330006
E sales@ergomounts.co.uk

www.ergomounts.co.uk www.medicalmounts.co.uk



24"



102mm



None



+/-90°



0°



L/P



Black



Yes



No



up to 12kg



3 Years



VESA 75x75mm
100x100mm



see it your way...

Delta Series Triple Pivot LCD Wall Mounts

The Delta Series triple pivot direct wall mount mounts any VESA 75mm x 75mm or 100mm x 100mm LCD monitor or TV close to the wall and provides tilt, angle left to right and portrait to landscape movement. Its two piece design allows for quick and simple installation.

Supports up to 12 kg in weight. Suitable for touch screen applications.

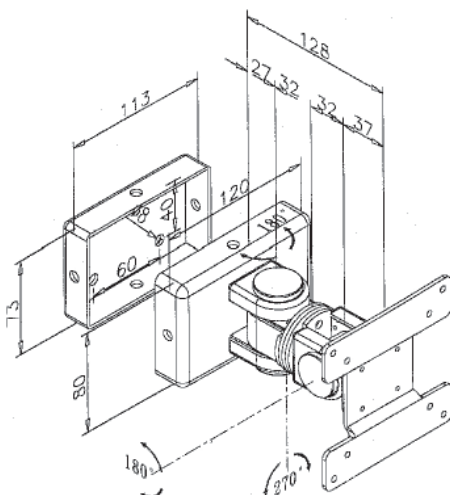
Available in black finish.

Part Number: EM170B - Triple Pivot Black

- Durable, cost effective adjustable wall mount for LCD monitors and TVs.
- Simple Installation.
- Tilt, swivel and landscape to portrait movement.
- Touch screen stable.
- Provides +/-90° tilt and +/-90° angle left to right adjustment.
- Monitors can move through landscape to portrait.
- Supplied with 75mm x 75mm and 100mm x 100mm VESA interface plates.
- Can be locked off in position.

Specifications

Arm Ext.:	140mm
Monitor Height Adjust	None
Tilt Adjustment:	+/-90°
Monitor Swivel	+/-90°
Monitor Orientation	Landscape to Portrait
Colour	Black
Touch Screen Stable	Yes
Keyboard and Mouse Tray	No
Max Monitor Weight	12kg
Product Warranty	3 Years



24"



140mm



None



+/-90°



+/-90°



L/P



Black



Yes



No



up to 12kg



3 Years


VESA 75x75mm
100x100mm


see it your way...

T +44 (0)1252 333326 F +44 (0)1252 330006
E sales@ergomounts.co.uk

www.ergomounts.co.uk www.medicalmounts.co.uk