

Rugged Industrial 18 Key Keyboard



Overview

A rugged industrial 18 key keyboard designed to offer a compact footprint size with quality Stainless Steel construction. This 18 key keyboard functions much like a telephone keypad, in that each press of a key rotates it through different character outputs. With custom language, layout and coding options we can design it for use in any application. See all of the specifications below, and if something isn't listed that you may require, contact us and let us know as we may already have the solution you need!

General Specifications

GENERAL				
Keys	Sealed mechanical			
Key Travel	0.4mm			
Life Expectancy	>1 million switch cycles			
Operating Force	160gf ± 50gf			
MTBF	60,000 hours			
MTTR	20 minutes			
Key Illumination	Full key illumination via LED back lighting, powered via USB			
ELECTRICAL AND ELECTRONIC				
Supply Voltage	5V DC ± 5%			
Supply Current	<480mA illuminated			
Interface	USB			
MECHANICAL				
Material	Stainless Steel (304) Case / Bezel, Wear & Chemical resistant Polyester overlay			
Mounting	Cased, Bezel, Rear or Flush mount			
Dimensions (mm)	Reference Dimensions on Page 3			
Weight (g)	500g Cased, 200g Uncased			
ENVIRONMENTAL				
Operating Temperature	-40°C to +85°C			
Relative Humidity	95% non-condensing			
IP Seal Level	IP22			
Vibration	5G, 5-2KHz any plane			
Conformal Coating	PCB is protected using conformal coating at 50µm (typical) thickness.			
CUSTOMISATION				
Colour	Full customisation of case colour available			
Coding	Key operations can be customised to fit software needs			
Dimensions	Physical dimensions can be customised			
Front Sheet	All languages and custom variants available			
Key Illumination	Full or part key illumination via LED back lighting			
WARRANTY				
Warranty Period	3 Years standard return to base. Extendable to 5 Years if required			
STANDARD KEY CODES				
KEY	1 st PRESS OUTPUT	2 nd PRESS OUTPUT	3 rd PRESS OUTPUT	4 th PRESS OUTPUT
1	1	A	B	C
2	2	D	E	F
3	3	G	H	I
4	4	J	K	L
5	5	M	N	O

6	6	P	Q	R
7	7	S	T	U
8	8	V	W	X
9	9	Y	Z	
0	0	SPACE		
.	.	-	+	
ENT	ENTER			
BKS	BACKSPACE			
↑	ARROW UP			
DEL	DELETE			
←	ARROW LEFT			
↓	ARROW DOWN			
→	ARROW RIGHT			



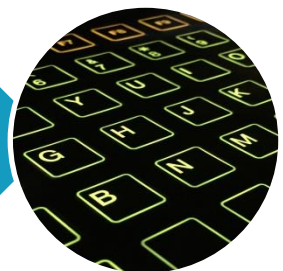
Prefer to have your keyboard look a little different? You can choose any colour case, bezel and frontsheet you like!

You can have any key output anything you want, from key combinations to multiple characters, on a single key!

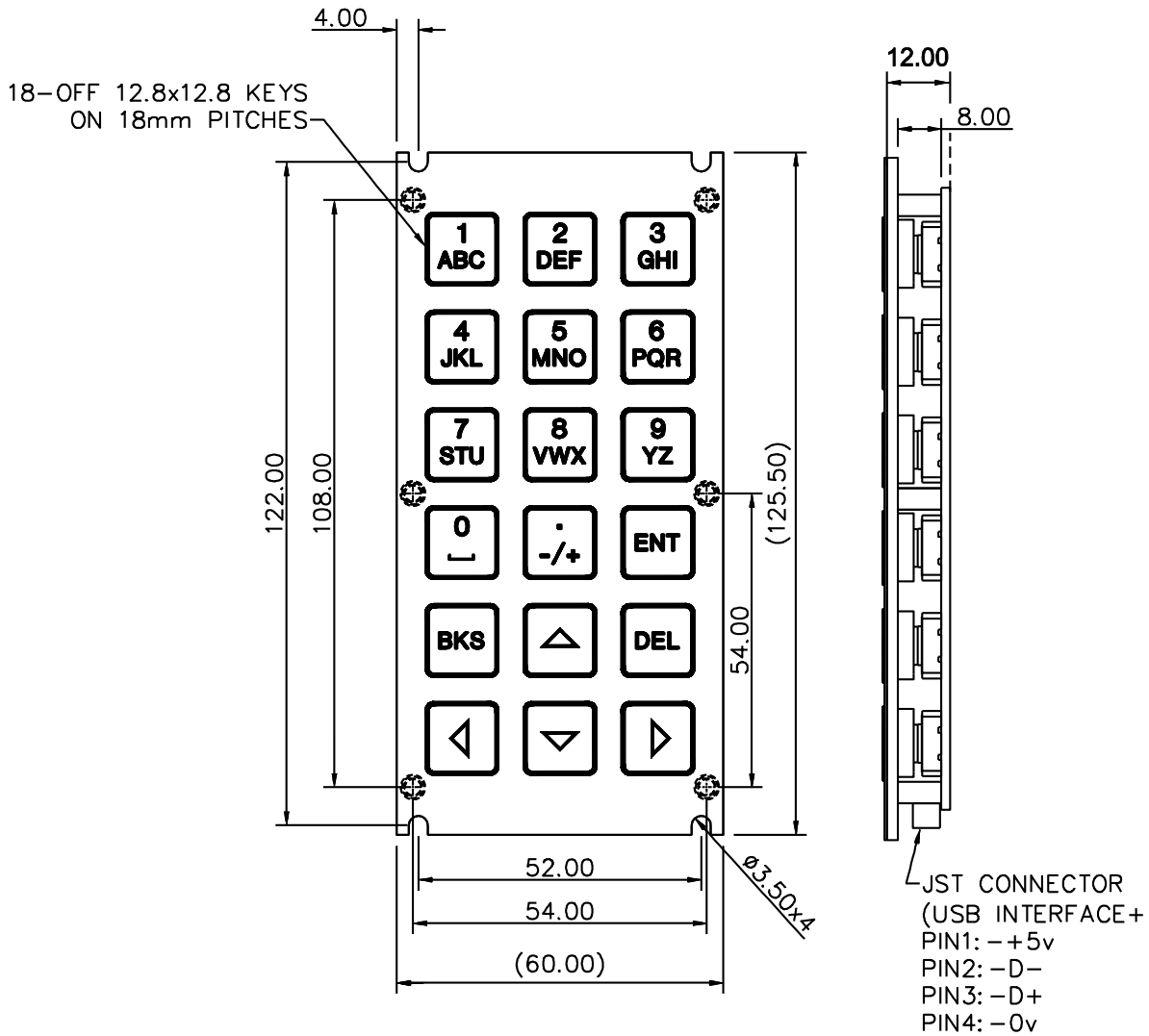


If you require a certain language or even a custom layout with keys detailing a custom function such as **OPEN DOOR**, we can do this for you too!

Need to use your keyboard in a dark room? Our keyboards can be backlit illuminated via LED backlight, with any colour combinations!



Dimensions



COLOURS	
LEDBACKGROUND COLOUR	: - GRAPHITEBLACK, RAL9011.
GEND/BORDER COLOUR	: - TRANSLUCENT WHITE.
ILLUMINATION COLOUR	: - WHITE.

CONNECTOR INFORMATION

ID	MANUFACTURER	PART NUMBER	CONTACTS	ORIENTATION	MATING CONNECTOR
CN2	JST	S4B-PH-K-S(LF)(SN)	4	Right Angle	JST 04CR-6H-P