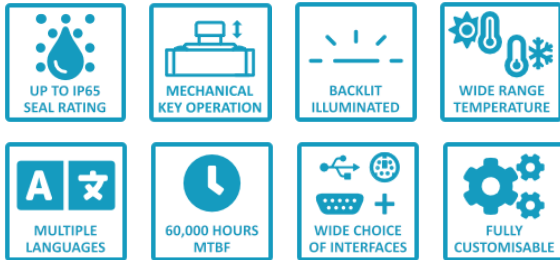


Fully customisable 72T Series Keyboard



Overview

A rugged industrial 72 key keyboard with trackerball mouse, designed to offer a compact footprint size with quality Stainless Steel construction and up to an IP65 seal rating – making this product ideal for use in conditions where equipment must be carefully sanitized, such as in the Food Industry. With custom language, layout and coding options we can design it for use in any application. See all of the specifications below, and if something isn't listed that you may require, contact us and let us know as we may already have the solution you need!



General Specifications

GENERAL	
Keys	Sealed mechanical
Key Travel	0.4mm
Life Expectancy	>1 million switch cycles
Operating Force	160gf ± 50gf
MTBF	60,000 hours
MTTR	20 minutes
Ball Material	Phenolic Resin
Ball Colour	Black
Ball Size	50mm (2")
Resolution	200 pulses/ball revolution
Tracking Force	<50gms (nominal)
Ball Revolutions	>6 million
ELECTRICAL AND ELECTRONIC	
Supply Voltage	5V DC ± 5%
Supply Current	<480mA via USB / <200mA via PS/2
Interface	USB / PS2 / AT / RS232 / RS422 / RS485 / XT / TTL / DEC / SUN
MECHANICAL	
Material	Stainless Steel (304)
Mounting	Cased, Bezel, Rear or Flush mount
Dimensions (mm)	Reference Dimensions on Page 3
Weight (g)	2.4Kg Cased, 1.25kg Uncased

ENVIRONMENTAL

Operating Temperature	-20°C to +60°C
Storage Temperature	-40°C to +85°C

Relative Humidity	95% non-condensing
IP Seal Level	IP65
Vibration	5G, 5-2KHz any plane

CUSTOMISATION

Colour	Full customisation of case colour and logos available
Trackerball	Various colours and stainless steel
Coding	Key operations can be customised to fit software needs
Dimensions	Physical dimensions can be customised
Front Sheet	All languages and custom variants available
Key Illumination	Full or part key illumination via LED back lighting

WARRANTY

Warranty Period	3 Years standard return to base. Extendable to 5 Years if required
-----------------	--



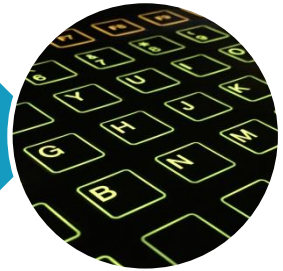
Prefer to have your keyboard look a little different? You can choose any colour case, bezel and frontsheet you like!

You can have any key output anything you want, from key combinations to multiple characters, on a single key!



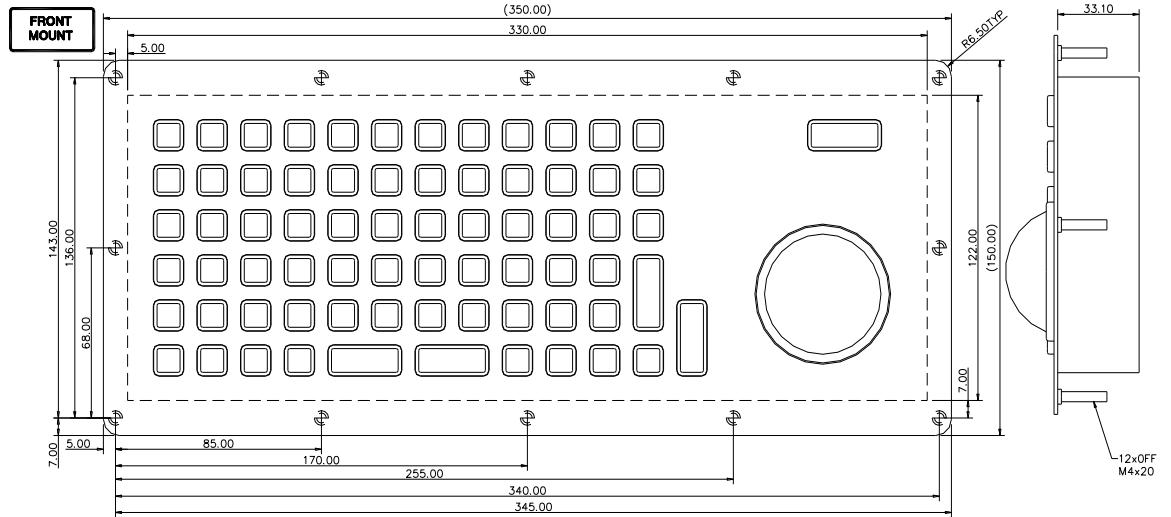
If you require a certain language or even a custom layout with keys detailing a custom function such as **OPEN DOOR**, we can do this for you too!

Need to use your keyboard in a dark room? Our keyboards can be backlit illuminated via LED backlight, with any colour combinations!

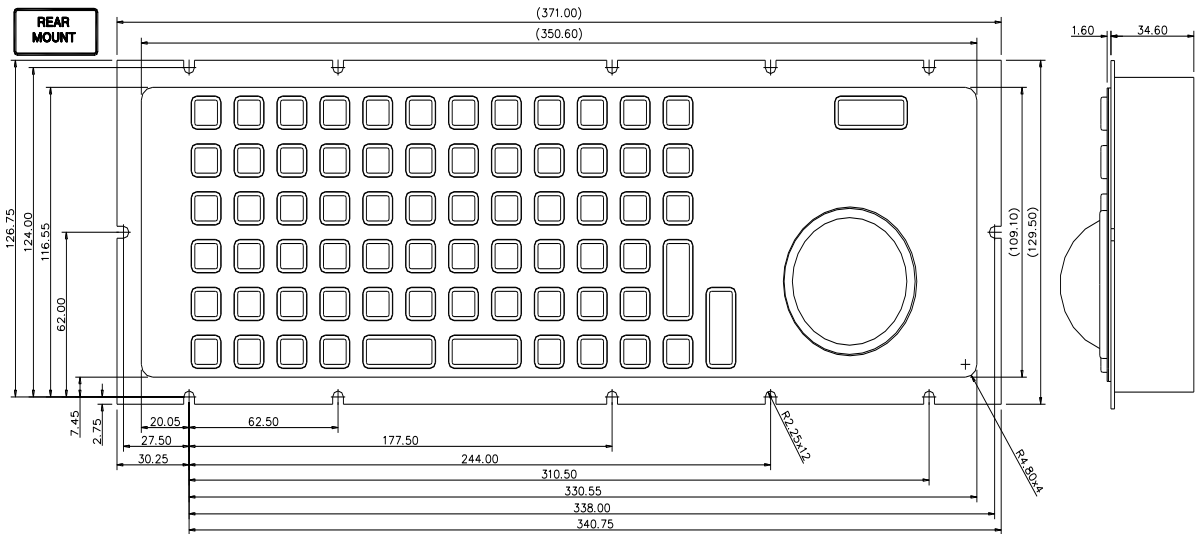


Dimensions

FRONT MOUNT

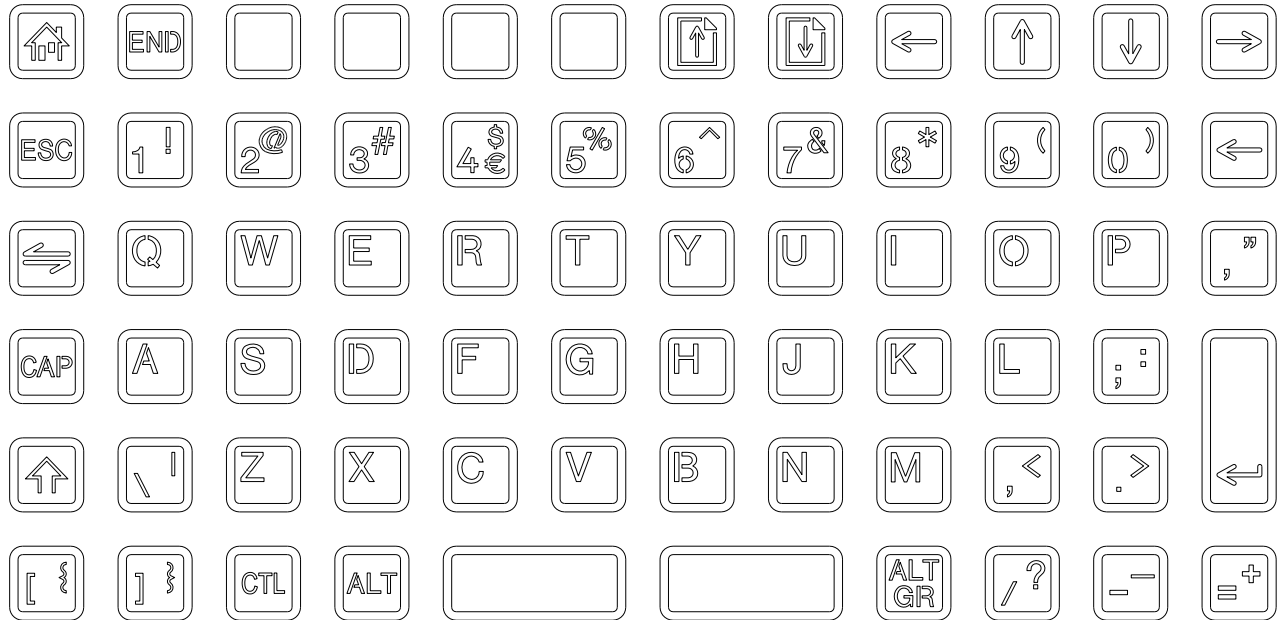


REAR MOUNT

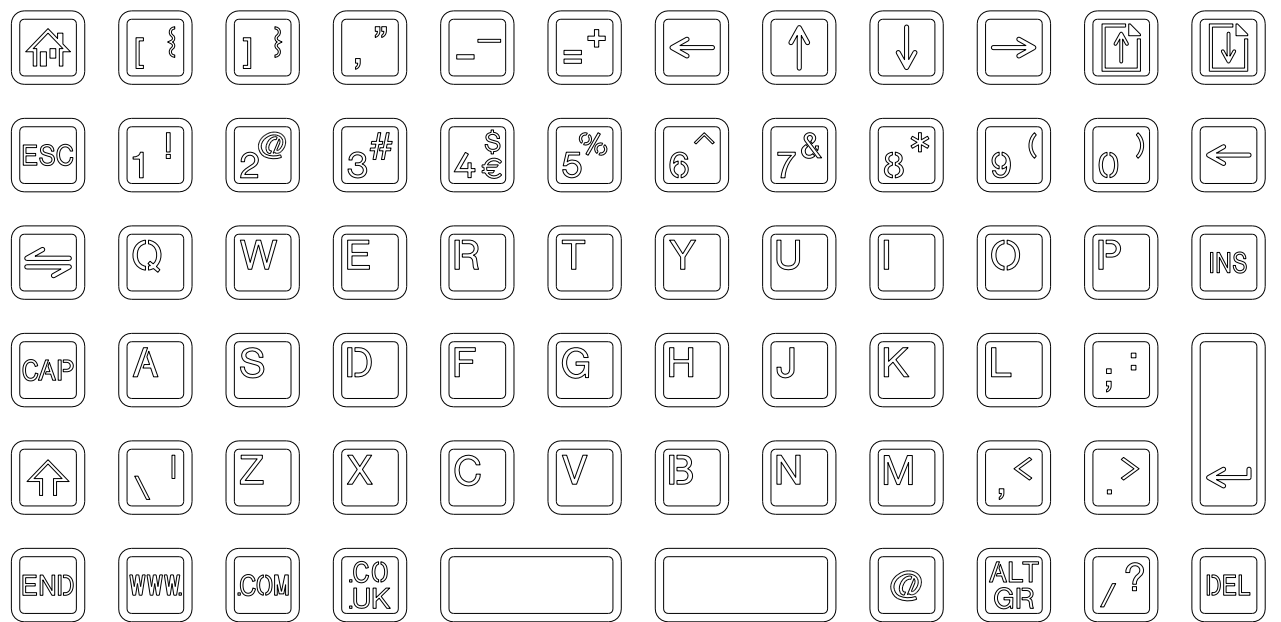


72T Layouts

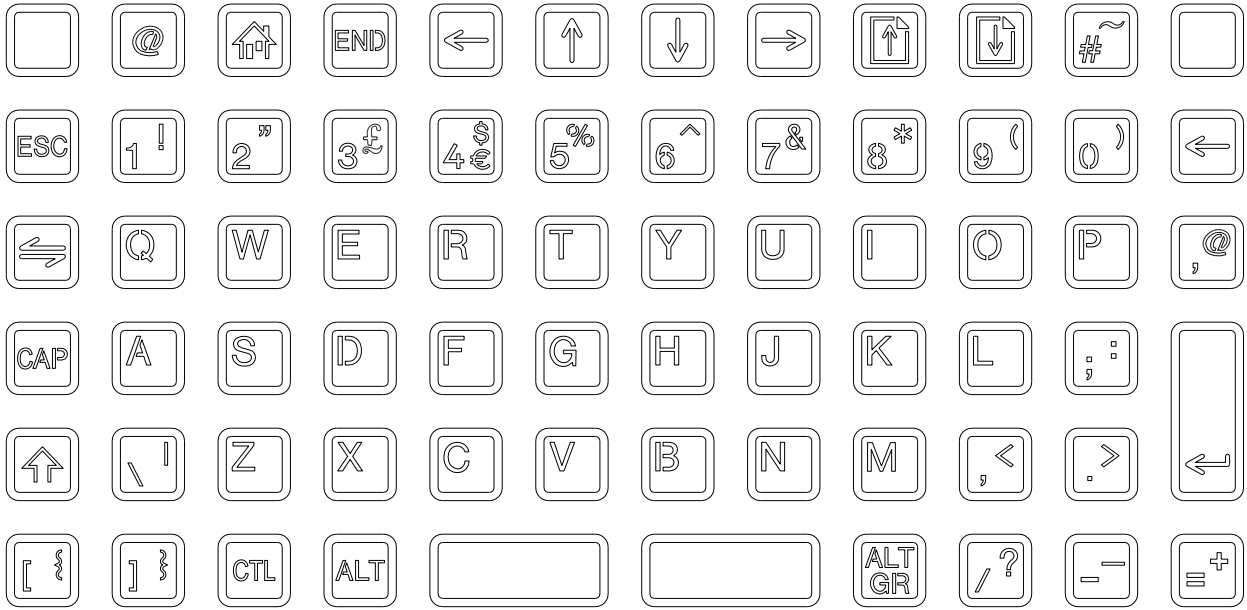
USA-1



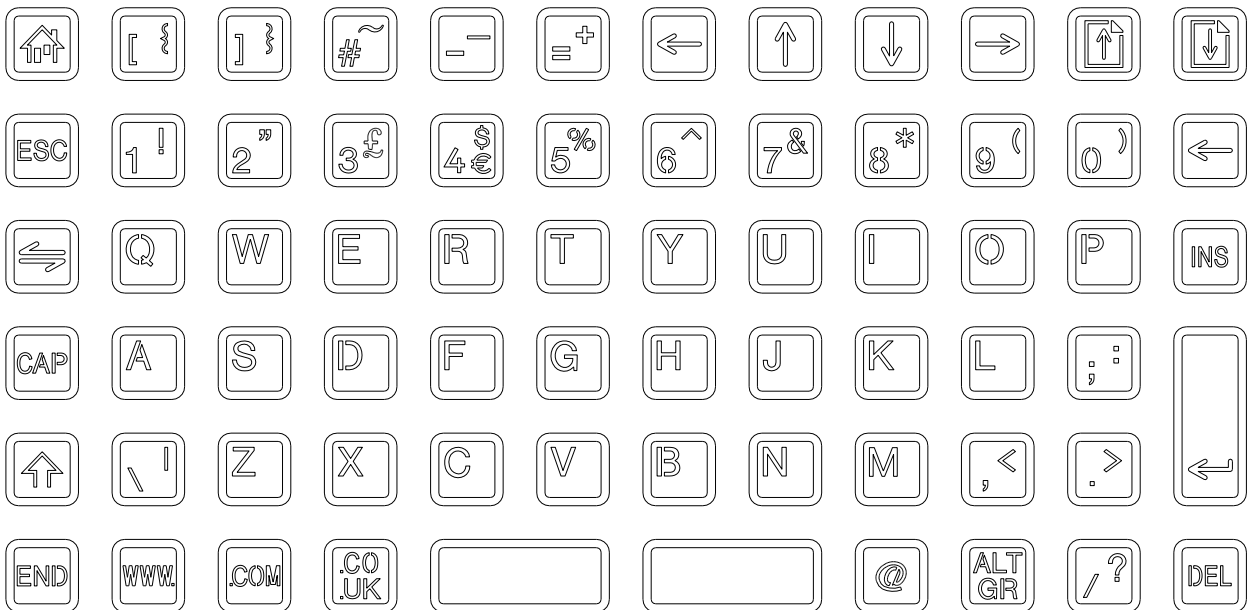
USA-2



UK-1



UK-2



UK-3

