

## Fully customisable 42T Series Keyboard

|                        |                          |                           |                        |
|------------------------|--------------------------|---------------------------|------------------------|
| UP TO IP67 SEAL RATING | MECHANICAL KEY OPERATION | BACKLIT ILLUMINATED       | WIDE RANGE TEMPERATURE |
| MULTIPLE LANGUAGES     | 60,000 HOURS MTBF        | WIDE CHOICE OF INTERFACES | FULLY CUSTOMISABLE     |

## Overview

A rugged industrial 42 key keyboard with trackerball mouse, designed to offer a compact footprint size with quality Stainless Steel construction and up to an IP67 seal rating – making this product ideal for use in conditions where equipment must be carefully sanitized, such as in the Food Industry. With custom language, layout and coding options we can design it for use in any application. See all of the specifications below, and if something isn't listed that you may require, contact us and let us know as we may already have the solution you need!



## General Specifications

| GENERAL                   |   |
|---------------------------|---|
| Keys                      | Sealed mechanical   |
| Key Travel                | 0.4mm   |
| Life Expectancy           | >1 million switch cycles  |
| Operating Force           | 160gf ± 50gf  |
| MTBF                      | 60,000 hours  |
| MTTR                      | 20 minutes  |
| Ball Material             | Phenolic Resin  |
| Ball Colour               | Black   |
| Ball Size                 | 50mm (2")   |
| Resolution                | 200 pulses/ball revolution  |
| Tracking Force            | <50gms (nominal)  |
| Ball Revolutions          | >6 million  |
| ELECTRICAL AND ELECTRONIC |   |
| Supply Voltage            | 5V DC ± 5%  |
| Supply Current            | <75mA (non-illuminated)   |
| Interface                 | USB / PS2 / AT / RS232 / RS422 / RS485 / XT / TTL / DEC / SUN                   |
| MECHANICAL                |   |
| Material                  | Stainless Steel (304) Case / Bezel, Wear & Chemical resistant Polyester overlay |
| Mounting                  | Cased, Bezel, Rear or Flush mount   |



# 42T Series Keyboard

COMPUTERS | WORK STATIONS | MONITORS | KEYBOARDS | TRACKERBALLS

|                 |                                |
|-----------------|--------------------------------|
| Dimensions (mm) | Reference Dimensions on Page 3 |
| Weight (g)      | 2.4Kg Cased, 1.25kg Uncased    |

## ENVIRONMENTAL

|                       |                |
|-----------------------|----------------|
| Operating Temperature | -20°C to +60°C |
| Storage Temperature   | -40°C to +85°C |

|                   |                      |
|-------------------|----------------------|
| Relative Humidity | 95% non-condensing   |
| IP Seal Level     | IP67                 |
| Vibration         | 5G, 5-2KHz any plane |

## CUSTOMISATION

|                  |  |
|------------------|--|
| Colour           | Full customisation of case colour and logos available  |
| Trackerball      | Various colours and stainless steel                    |
| Coding           | Key operations can be customised to fit software needs |
| Dimensions       | Physical dimensions can be customised                  |
| Front Sheet      | All languages and custom variants available            |
| Key Illumination | Full or part key illumination via LED back lighting    |

## WARRANTY

|                 |  |
|-----------------|--|
| Warranty Period | 3 Years standard return to base. Extendable to 5 Years if required |
|-----------------|--|



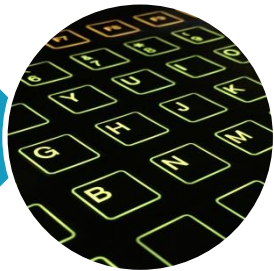
Prefer to have your keyboard look a little different? You can choose any colour case, bezel and frontsheet you like!

You can have any key output anything you want, from key combinations to multiple characters, on a single key!



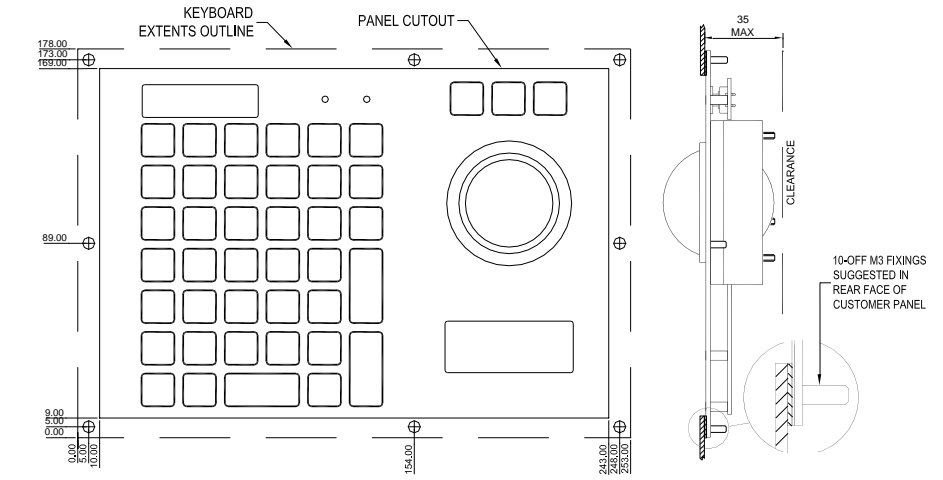
If you require a certain language or even a custom layout with keys detailing a custom function such as **OPEN DOOR**, we can do this for you too!

Need to use your keyboard in a dark room? Our keyboards can be backlit illuminated via LED backlight, with any colour combinations!

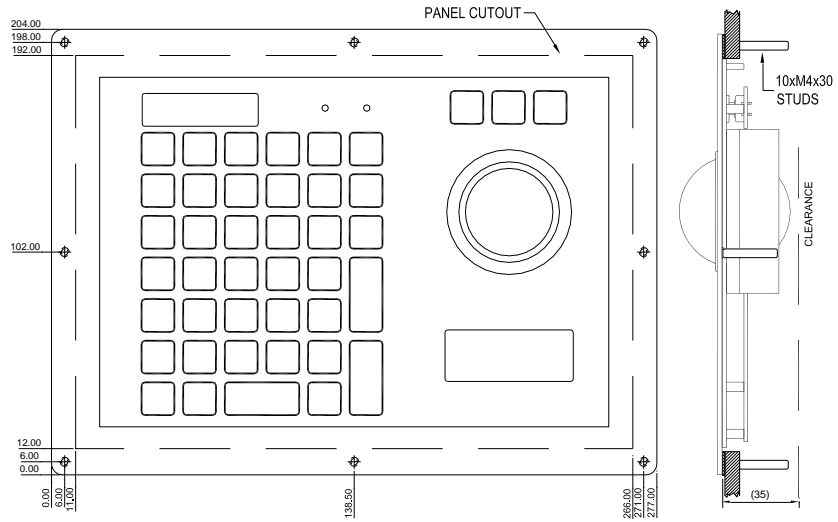


## Dimensions

REAR MOUNT



BEZEL MOUNT



CASED

